

Global Leadership Program – The University of Tokyo



Global Education for Innovation & Leadership

Global Leader Lecture & Workshop

(グローバルリーダー講義)

Syllabus & Schedule
for
February 2023

Outline:

The GLP Global Education for Innovation and Leadership Program (GEFIL) is designed to equip its students with the competence necessary to play meaningful leading roles in global society as the next generation of creative and responsible change-makers. The 'Global Leader Lectures' is a credit-bearing, compulsory GEFIL course for students participating in the Independent Research Project Phase 2. This course is conducted as an intensive 3-day workshop over a weekend in late February. It aims at leveraging the knowledge, skills, and insights gained in the Independent Research Project courses and their studies abroad, for students to develop a clear sense of their own 'leadership by creativity.'

How do you as young leaders envision the future ... and how to get there? How can you achieve transformational change for a world that seeks 'to leave no one behind' (2030 Agenda for Sustainable Development)? What kind of new initiatives would you propose to fulfil the SDG pledge of creating a 'just, equitable, tolerant, open and socially inclusive world in which the needs of the most vulnerable are met'? How do you identify needs and obstacles in achieving your planned results?

This intensive workshop closely engages with these questions through a 3-part structure of Keynote Lecture, Training Sessions facilitated by representatives of global corporations, international organizations, academia as well as public intellectuals, and students' Teamwork in well diversified teams from different thematic fields.

Each year, the workshop will revolve around a specific thematic focus. **In February 2023, the focus will be on 'Leadership, entrepreneurship, and citizenship for sustainability.'**

To ensure leadership opportunity and for students' voices to be heard, a Steering Committee including 7-10 student representatives from the five thematic fields of Phase 2 will be involved in organizing the workshop.

Learning Outcomes:

Students will gain

- creative thinking skills;
- the ability to identify global problems and construct an idea of resilient societies;
- a solid understanding of well-being and happiness, their implications and realization;
- a vision of their own persona as a potential future leader;
- knowledge related to international and interdisciplinary complex issues;
- improvement of their skills to communicate and work effectively in internationally and interdisciplinary teams;
- skills in organizing international and interdisciplinary events for diverse audiences.

Assessment: The course will be assessed by a combination of 50% for active participation and 50% for the final team presentation.

Keywords:

Leadership by creativity; leadership skills; design thinking; visions, resilience; well-being; happiness; vulnerability; sustainable societies; inclusiveness.

Schedule (template –see next page for tentative schedule in 2023):

Session 1: Introduction to the workshop and participants

Session 2: Keynote Lecture 1

Session 3: Teambuilding

Session 4: Keynote Lecture 2

Session 5-7: Training session

Session 8-10: Teamwork

Session 11-12: Team Presentations

Session 13: Final discussion of all participants

Teaching Method:

The intensive workshop follows a tripartite structure of Keynote Lecture, Training Sessions, and Teamwork Sessions. Students will be distributed in well-diversified teams of approx. 5-7 students from the different Phase 2 Thematic Fields.

For the Keynote Lecture(s), we will invite leading expert(s) representing the thematic focus. The Training Sessions are led by experts in leadership training, design thinking and other relevant fields.

In the Teamwork Sessions, student teams work on small-scale projects relevant to the thematic focus, in order to train their creative thinking skills and develop their leadership potential. GEfIL mentors will guide and support the Teamwork Sessions.

Notes on Taking the Course

This is a compulsory GEfIL course for students participating in the Independent Research Project Phase 2. Upon completing this course successfully, students will receive 2 credits.

Overview of the Workshop in 2023

Dates for 2023: 16 - 19 February 2023

Location: Shinchi-cho, Fukushima and the surrounding municipalities

Focus Topic: *Leadership, entrepreneurship, and citizenship for sustainability*

Sustainability could be pursued through our continuous effort to make our society and global environment sustainable. It cannot be easily achieved by a group of leaders and experts independent from citizens (a traditional 'owner-customer' or 'leader-follower' model). Leaders and experts must be equipped with design thinking skills, especially empathy, to co-create social innovations so that each citizen can autonomously act for sustainability, directly or indirectly.

In addition, sustainability is a multi-layered concept. Human activities and natural phenomena at all levels are interrelated from the global sustainability perspective. The sustainability of a specific area cannot be separated from interactions with other areas and levels. Citizenship is thus a plural concept, and global leaders can be local, national, and global citizens.

The disaster and 'redevelopment' of Fukushima would be an essential issue for leaders to discuss paths for sustainability as citizens at multiple layers, not as independent solution providers.

Guiding Questions:

1. Who would be 'stakeholders' in what sense?
2. What does 'redevelopment' of Fukushima mean from different perspectives?
3. What leadership, or followership as citizens, would become important in the era of 'no growth'?
4. What can enhance the motivation and autonomy of local citizens in Fukushima to make their society and environment sustainable?
5. What hinders people in different areas and some leaders/experts from having a sense of citizenship in discussing issues in Fukushima and being a part of co-creation?

[Suggested Readings]

- A) 開沼博 (2015) 『はじめての福島学』 イースト・プレス. (only in Japanese)
- B) Erik Hollnagel and Yushi Fujita, "The Fukushima disaster—Systemic failures as the lack of resilience" Nuclear Engineering and Technology, Vol. 45, No.1, Feb. 2013
<https://www.sciencedirect.com/science/article/pii/S1738573315300024>
- C) Masaharu Maeda, Misari Oe, "Mental Health consequences and social issues after the Fukushima disaster," Asia Pacific Journal of Public Health, Vol. 29, No. 2, 2017
<https://journals.sagepub.com/doi/full/10.1177/1010539516689695>
- D) Michio Murakami, et al., "The decision to return home and wellbeing after the Fukushima disaster," International Journal of Disaster Risk Reduction, No. 34, 2020
<https://www.sciencedirect.com/science/article/pii/S2212420919305163>
- E) Joke Kenens, et al., "Science by, with and for citizens: rethinking 'citizen science' after the 2011 Fukushima disaster," Palgrave Communication, Vol. 6, No. 58, 2020
<https://www.nature.com/articles/s41599-020-0434-3>

[Suggested Videos]

- * Updates of the issues in Fukushima
- 1) NHK <https://www3.nhk.or.jp/nhkworld/en/ondemand/video/3004455/> (28:00)
- 2) Euronews <https://youtu.be/njEhkhCNjPc> (12:10)
- 3) BBC <https://youtu.be/TCDgM6rKBq0> (17:10)
- 4) National Geographic <https://youtu.be/jFv5yY7pMgQ> (13:52)
- * Great East Japan Earthquake
- 5) NHK <https://www3.nhk.or.jp/nhkworld/en/ondemand/video/3016087/> (48:30)
- * Decommissioning and decontamination
- 6) Atomic Reporters with Prof. Tatsujiro Suzuki <https://youtu.be/ec6hVzE-XuM>

Schedule (latest version*)

** Please note that the schedule may change depending on the situations of the field.*

February 16 (Thursday)

13:00	<u>Departure of chartered bus from Hongo Campus</u> (Approx. 15:00: 20-min stop at Tomobe or Nakago Service Area on Joban Expressway)
18:00	Expected arrival at Hotel Grado Shinchi
18:00-21:00	Individual dinner (Team-building by each team)

February 17 (Friday)

6:00-8:00	Breakfast (included in the fee)
<u>9:30</u>	<u>Meet in Kankai Hall, next to the hotel</u>
9:30-9:50	Openings by Prof. Kensuke FUKUSHI and Prof. Nanyan GUO
9:50-10:00	Introduction by Dr. Shunsaku KOMATSUZAKI
10:00-10:20	Keynote lecture: Mr. Eiju HANGAI, Representative Director for Asubito Fukushima
10:20-12:00	Training Session: Leadership for sustainability Mr. Eiju HANGAI, Mr. Mitsuki ADACHI, and Mr. Yu IGARASHI, Asubito Fukushima
12:00-13:30	Individual lunch
(13:00-13:30	Courtesy visit to the town hall by the selected members)
<u>13:30</u>	<u>Meet in the observation room on the 4F of the town hall</u>
13:30-13:50	Panoramic view of Shinchi-cho and brief explanation
13:50-14:00	Move from the town hall to the Shinchi Energy Center (bus)
14:00-14:50	Site visit to the Shinchi Energy Center
14:50-15:00	Move from the Shinchi Energy Center to Kankai Hall (bus)
15:00-15:20	Site visit to the Shinchi Culture Center
15:20-17:20	Training Session: Sustainable energy & (re)development Mr. Kazuhiko ONO, Director of Planning and Promotion Division, Shinchi-cho, Fukushima Prof. Tsuyoshi FUJITA, Dept. of Urban Engineering, the University of Tokyo Dr. Toru HAYASHI, Assistant Professor, Dept. of Urban Engineering, the University of Tokyo
17:20-17:30	Break
17:30-18:30	Keynote lecture: Mr. Takeshi KOMINO, the Board and General Secretary, CWS (Church World Service) Japan
19:00-20:30	Optional gathering (Restaurant YU) / Individual dinner

February 18 (Saturday)

6:00-7:30	Breakfast (included in the fee)
<u>7:30</u>	<u>Departure of chartered bus from Hotel Grado Shinchi</u>
9:00-11:00	Training Session: Fieldtrip to the interim storage site
11:00-11:30	Radioactivity screening inspection
11:30-15:45	Training Session: Fieldtrip to the redevelopment sites Mr. Eiju HANGAI, Ms. Mariko OKISAWA, and Mr. Takanari KOKUBUN, Asubito Fukushima and dialogue with a Local Leader Ms.Yuko HIROHATA who trying community building through chili pepper cultivation.
	(14:05-14:35: Reserved lunch at Futabaya Ryokan, 1000 JPY for each)
16:00-18:00	Teamwork Session Discussion to prepare for the final presentation (Teams are free to continue working until 21:00)
18:00-20:30	Individual dinner
21:00	Closing of Kankai Hall

February 19 (Sunday)

6:00-8:30	Breakfast (included in the fee)
8:45	Hotel check-out (leave large bags in the lobby)
<u>9:00</u>	<u>Meet in Kankai Hall</u>
9:00-11:00	Team Presentations
11:00-11:30	Feedback on Presentations
11:30-11:50	Reflection on Teamwork & Workshop
11:50-12:00	Closing remark by Prof. FUKUSHI and Prof. GUO
12:00-13:00	Individual lunch
13:00	Departure of chartered bus from Hotel Grado Shinchi
	(Approx. 16:00: 30-min stop at Tomobe Service Area on Joban Expressway)
18:30	Expected arrival at Hongo Campus

KEYNOTE SPEAKERS



Eiju HANGAI, the Representative Director of Asubito Fukushima.

<https://asubito.or.jp/>

Born in Odaka, Minamisoma City, Fukushima in 1953. Graduated from the University of Tokyo, Faculty of Law in 1978 and joined Tokyo Electric Power Company (TEPCO). Involved in new businesses starting up such as J Village (soccer national training center) and My Energy (electricity self-generation business). Also engaged in establishing an environmental NPO of paper recycling and reforestation. In 2010, retired as an executive officer of TEPCO. In March 2011,

out of a sense of responsibility for the nuclear accident and a desire to help rebuild the local community, set out to develop human resources who will lead the future of Fukushima. Since April 2013, as a representative Director of Asubito Fukushima, to train local elementary and junior high school students, high school students in Fukushima, and university students from Fukushima to lead the recreation of Fukushima.



Takeshi KOMINO, the Board and General Secretary, CWS (Church World Service) Japan

<https://www.cwsjapan.org/>

Born in 1980, after engaging in humanitarian operation in Afghanistan, Pakistan, Myanmar, and Thailand, he established CWS Japan during the East Japan Earthquake and Tsunami response and currently serves as the Board and General Secretary of CWS Japan. He also serves as Deputy Chairperson and a member of Executive Committee for Asian Disaster Reduction and Response Network (ADRRN), heads ADRRN Tokyo Innovation Hub (ATIH), and serves as a member of Regional Advisory Group of Global Network of

CSOs for Disaster Reduction (GNDR) and a joint secretariat of Japan CSO Coalition for DRR (JCC-DRR). He graduated from Doshisha University, and holds Development Studies M.A. from Brandeis University.

TRAINING SESSION – LEADERSHIP FOR SUSTAINABILITY by:



Yuko HIROHATA: Representative of Odaka Kobo

Born in Odaka, Minamisoma City, Fukushima in 1958.

In March 2011, Tsunami damaged her house, but her family was safe. After retiring in 2013, she began cultivating and shipping flowers from a near temporary housing. In 2015, she opened a community space 'Odaka Plat Home' where anyone can casually stop by and interact. One day, she discovered by chance that animals would not touch chili peppers while wildlife damage is hindering the resumption of agriculture.

Then in 2017, she launched a private organization 'Odaka Kobo' to revitalize Odaka area, developing products using locally produced chili peppers.



Mariko OKISAWA: Director of Next Generation Development Team, Asubito Fukushima.

Born in Kashima, Minamisoma City, Fukushima. Previously she worked as an elementary school clerk when the Great East Japan Earthquake took place in March 2011. After the earthquake, she keenly felt the limitations in caring for students from school office. At such time, she met Mr. Hangai and sympathized with his thought, 'I want children to have many experiences'. Joined Asubito Fukushima in April 2013. Now she is in charge of planning and managing experiential learning for elementary and junior high school

students, and accompanies project-based learning activities for high school and university students. Especially with high school students, she completely supports the interview methods to know the existence of passionate adults who are moving forward in their area.



Takanari KOKUBUN: Program Officer of Next Generation Development Team, Asubito Fukushima.

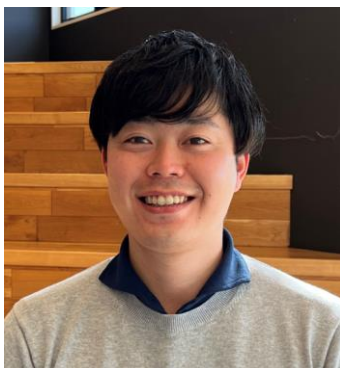
Born in Koriyama City, Fukushima. During high school, he started activity with Asubito Fukushima and was involved in the launch of 'Fukushima Taberu Tsushin (food staff magazine),' that reports on farmers in Fukushima and conveys their thoughts and feelings. Through this activity, he had got interested in regional development and enrolled in the University of Miyazaki, Faculty of Regional Innovation. After

graduating in 2021, he joined Asubito Fukushima and mainly supports activities with high school and university students.



Mitsuki ADACHI: Director of Employee Training Team 1, Asubito Fukushima.

Born in Kadoma City, Osaka in 1994. After graduating from Osaka University, School of Foreign Studies, Swahili Major in 2017, he joined Sumitomo Corporation. He is engaged in importing raw-materials of copper, nickel, molybdenum, vanadium and niobium. From April 2022, he was transferred to Asubito Fukushima as a trainee, in charge of employee training.



Yu IGARASHI: Director of Employee Training Team 2, Asubito Fukushima.

Born in Minami-Aizu Town, Fukushima in 1993. After graduating from Fukushima University, Faculty of Administration and Social Sciences in 2016, he joined Japan Travel Bureau (JTB). He is engaged in regional revitalization projects with corporations and government offices. In April 2022, he was transferred to Asubito Fukushima as a trainee, in charge of employee training.

TRAINING SESSION – SUSTAINABLE ENERGY & (RE)DEVELOPMENT by:



Prof. Tsuyoshi FUJITA: Professor of Urban Engineering, the University of Tokyo.

He started Shinchi Smart Energy Research and related research projects in Fukushima in a wide collaboration among local, engineering and academic experts after the Great Earthquake in 2011. His research fields have been eco industrial developments, carbon neutral city, urban environment simulation system, circular economy planning and spatial Life Cycle Assessment. He has been engaged in various national projects to develop integrative urban technology and policy simulation system for Japanese and Asian cities and regions.



Dr. Toru HAYASHI: Assistant Professor of Urban Engineering, the University of Tokyo.

Completed his Ph.D. at the Department of Applied Chemistry, the University of Tokyo, for his research on artificial photosynthesis. After working at the Ministry of Environment, Japan in the fields such as climate change and circular economy, he joined the Department of Urban Engineering in April 2022. He is currently engaged in research to support the development of regional decarbonization policies. He specializes in environmental policy and environmental systems studies.

PRACTICAL INFORMATION

- Important instructions for the interim storage site visit
 - Please follow the instructions given by the guide.
 - You are not allowed to eat nor smoke during the visit. You may drink something ONLY IN THE BUS.
 - There is no restroom in the site.
 - DO NOT TAKE A PHOTO OF ANY PERSON NOR PRIVATE BUILDING for the privacy protection.

- Fieldtrip: Faced with the bright and dark sides of the disaster affected area

February 18 (Saturday), 2023

11:45-12:00 The old shopping streets of Futaba-machi (not reconstructed)

12:05-12:10 Blocked community in Kono-kusa, Futaba in an Evacuation Order Zone

12:15-12:45 Ukedo Elementary School, Namie-machi: A "Remain of the Earthquake"

12:45-13:25 Fukushima Hydrogen Energy Research Field (from bus)

13:25-13:55 Dialogue with Yuko HIROHATA, a community leader of Odaka, Minami-Soma

-New community development through the farming of red pepper without damage from wildlife-

14:05-14:35 Reserved lunch at Futabaya Ryokan (1000 JPY per each, fixed)

14:35-15:00 Fukushima Robot Test Field in Hara-machi, Minami-Soma (from bus)

15:00 Group photo at Asubito Park

15:05-15:45 Mega Solar Kashima and Wind Farm (from bus)

15:45 Arrival at Kankai Hall, Shinchi-cho

- Safety Information

Please protect yourself for the first response to any emergency, then follow the instructions by local staffs and collaborators.

In the Kankai Hall, please follow the signs of emergency exits. Once you get out of the building from the closest emergency exit, please gather in the grass park, south of the building. Then, follow the instructions by building staffs.

In the Hotel Grado Shinchi, please use staircases to go down to the ground floor. Get out of the building and gather in the parking lot in front of the hotel. Then, follow the instructions by the hotel staffs. You can find the evacuation plan in your room.

In case of emergency, you may know find any instruction from local staff, collaborator, or UTokyo professor. A principle would be to do your best to protect yourself. (E.g., "Tsunami Tendenko" is a historical lesson for survival in case of tsunami. It means that you must make your own decisions without waiting for anyone else's instructions, and protect yourself by running to the highest ground as soon as possible, even without worrying about your family.)

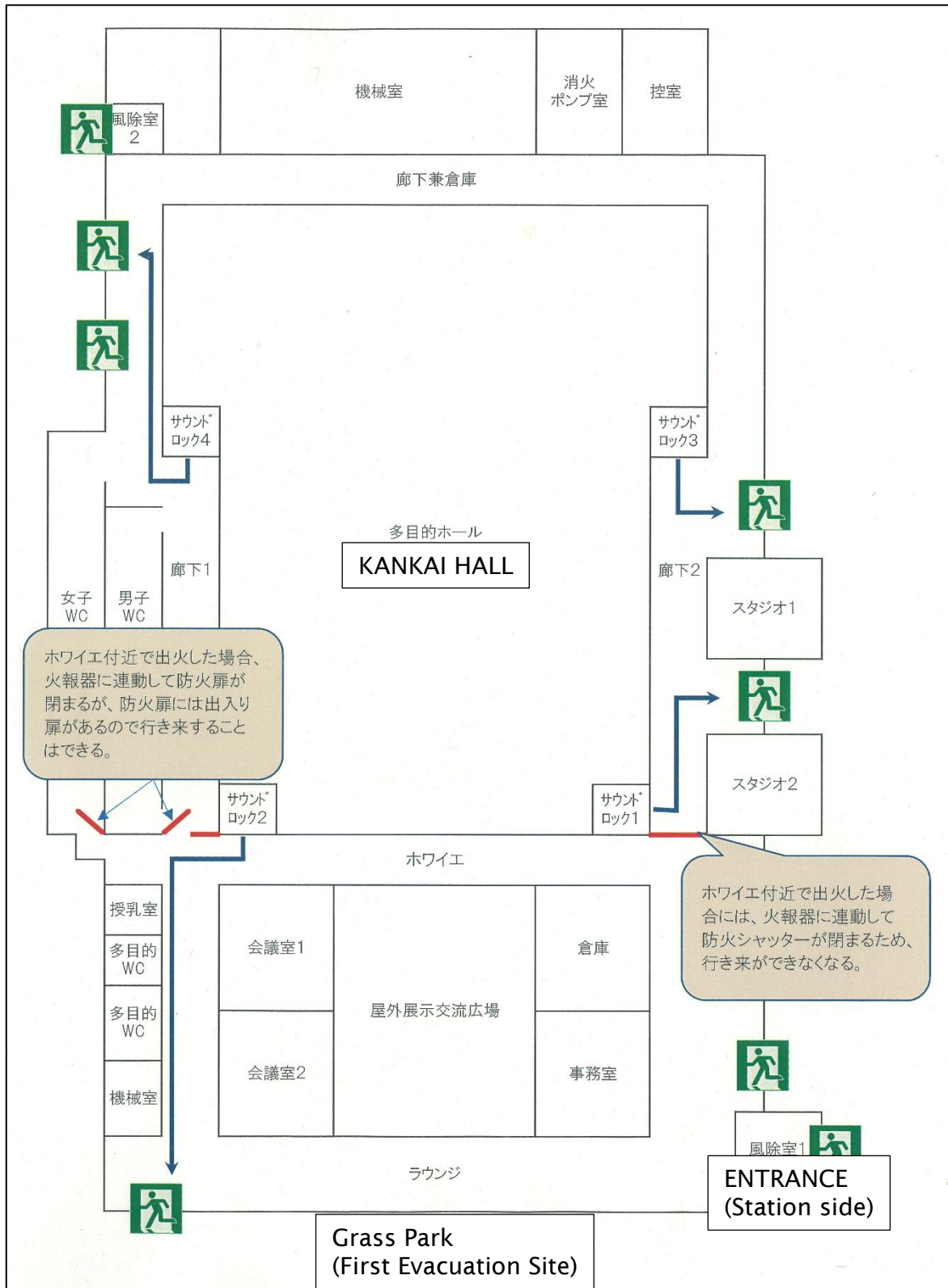


Fig.1 Evacuation routes in the Kankai Hall

- Emergency Contacts

GLLW program operator, Dr. Shunsaku Komatsuzaki (090-6964-3936)

GEFIL Program Director, Prof. Nanyan Guo (080-7818-8711)

GLP Admin Office, Ms. Yuko Takase and Ms. Etsuko Takada (03-5841-2925)

- Internet use in the buildings
 - Hotel Grado Shinchichi - WiFi
SSID: BUFFALO-GRADO_G
Password: 260grado
 - Kankai Hall - GEFIL WiFi
(Up to about 50 devices at the same time. Please avoid unnecessary connection.)
SSID: UTokyo_GEFIL
Password: 0358412925_GEFIL
 - Kankai Hall - Shinchichi Public WiFi
SSID: shinchifreeWi-Fi

You need to register your device through email or SMS EVERY HOUR. And, you can use this WiFi UP TO FIVE HOURS PER DAY.

- Hotel Information
 - Public Bath - Tsurushi-no-Yu

There is a public bath next to the hotel. You as hotel guests, can use it for free (except for the hot rock sauna).

The business hours are: (1) 15:00-24:00 (the last entry at 23:00) in the afternoon and (2) 6:00-8:00 (until 9:00 in weekends) in the morning.

Please bring face and bath towels in a bag in your room.

If you wish to use the hot rock sauna, you must get a bracelet with IC chip from the hotel reception, check-in the hot rock sauna at the bath reception, and after finishing, return the bracelet and pay the fee (700 yen) at the hotel reception.
 - Breakfast - Restaurant YU

You'll get breakfast tickets at the check-in. Please bring it to the restaurant when you wish to have breakfast.

Hours: 6:00-8:00am (until 9:00am in weekends)
 - Amenities

Please look at the website. <https://www.hotelgradoshinchi.com/room>

You can find most of basic amenities.
 - Rental bicycle

The hotel has a few rental bicycles for guests. It might be useful when you go to a convenience store or a drug store (700-1200m away).

- Tips about Food and Restaurant
 - Restaurant YU

Right next to the hotel, directly connected.

Hours: 11:00-21:00 (20:30 last order)

For lunch and dinner, you must get a bracelet with IC chip from the hotel reception, use ticket vending machines in the restaurant, and after finishing, return the bracelet and pay at the hotel reception (every time you use).

The restaurant has enough capacity (more than 40-50 seats), but due to the COVID-19 pandemic, it has some limitations in its operation. If many of you wish to use it at the same time, you may need to expect a LONG WAITING TIME. Please consider alternative places when you find a lot of customers.

➤ Meal box from Restaurant YU

Meal box is available from Restaurant YU (you can find the information in your room). It will be ready in 30 minutes. Last order would be at 20:00.

When you order it via extension call, you must pay first at the hotel reception and get a ticket to collect your meal box at the restaurant.

➤ Restaurants around the Hotel Grado Shinchi and Kankai Hall

You can find some restaurants in the Kankai Plaza, next (south) to the Kankai Hall. Also, there is a cafeteria Yoransho, south to the Kankai Plaza. Please check their business hours by yourself.

➤ Seven Eleven Fukushima Shinchi-cho

It would be the only convenience store within your walking distance. Opens 24 hours.

It is about 1200m away from the Hotel Grado Shinchi. You can walk there in 15-20 mins. Or, you can use a rental bicycle from the hotel.